



# **MFF Post-2020: Migration & Security**

**Asylum and Migration Fund  
Integrated Border Management Fund  
Internal Security Fund**

**7 September 2018, Marc-Arno HARTWIG (HOME.C4)**



Commission  
européenne

# ASYLUM and MIGRATION



## INTEGRATED BORDER MANAGEMENT



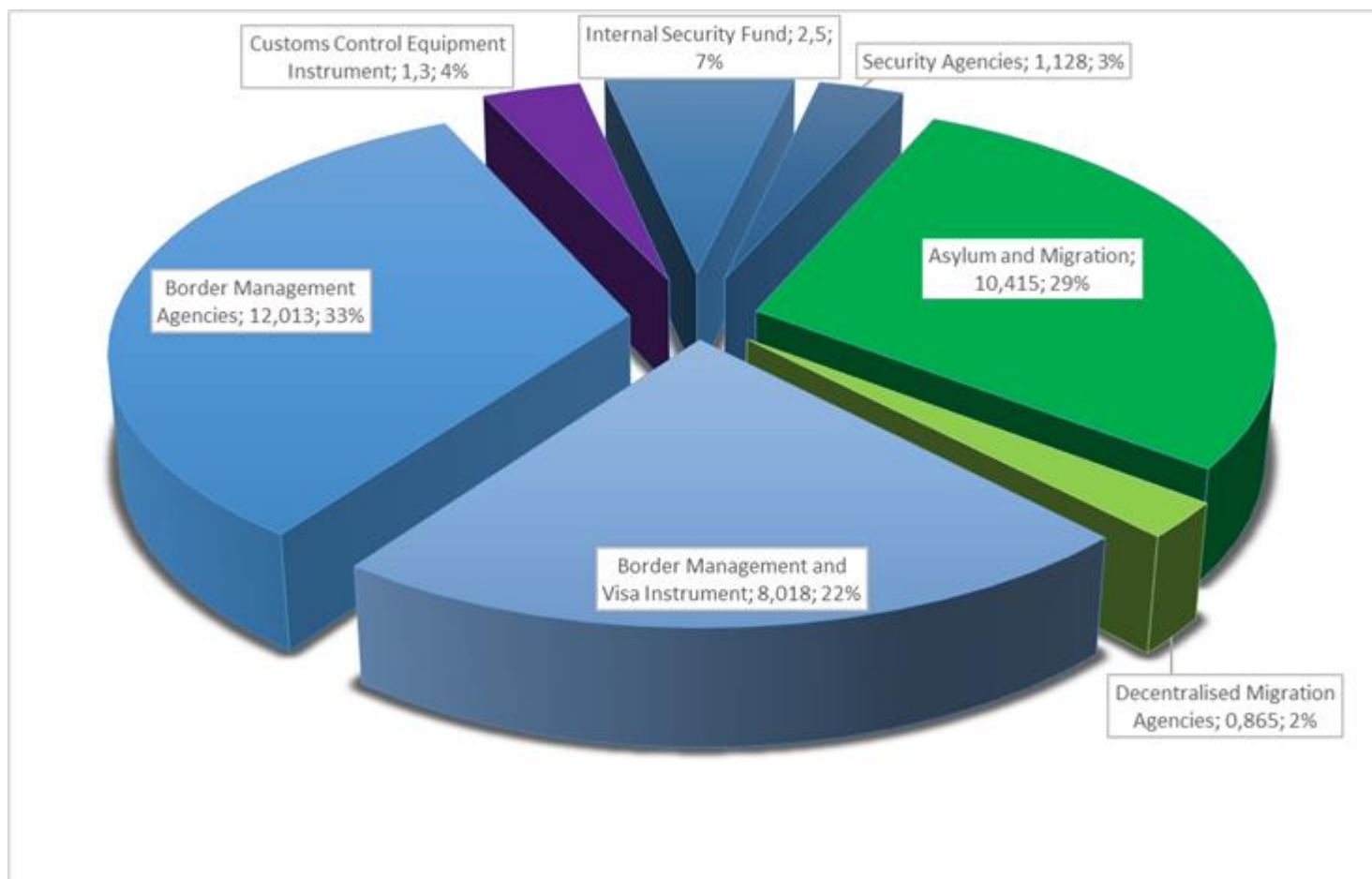
## INTERNAL SECURITY





Commission  
européenne

## Next MFF proposal: EUR 36.2 billion



## Asylum and Migration Fund (AMF)

*Scope:*

- 1) Strengthening the Common European Asylum System*
- 2) Supporting legal migration to the Member States and short-term integration*
- 3) Countering irregular migration through e.g. returns and increased cooperation with third countries*



## AMF - Scope of support



- *Top ups incentivising resettlements and transfers of applicants for international protection*
- *Voluntary and forced returns (incl. training, return monitoring)*
- *Improve processing of asylum applications to make them quicker and of higher quality*

- *Incentives for early integration measures at local and regional level (language and civic orientation courses)*





Commission  
européenne

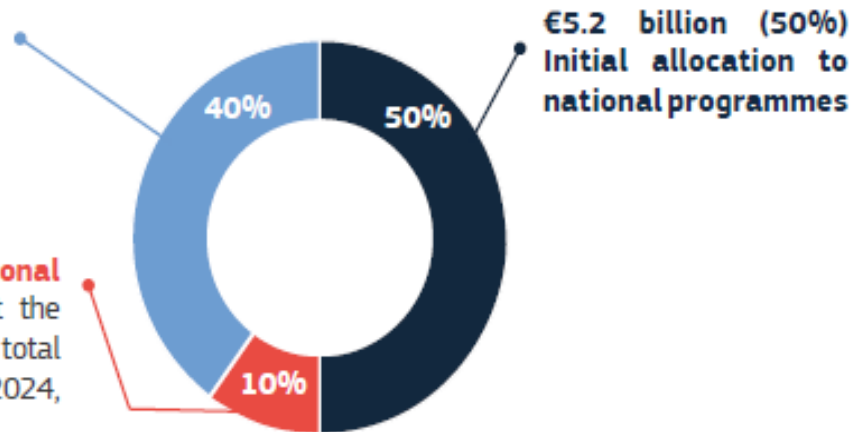
## AMF Budget

### €4.2 billion (40%) New thematic facility:

Under the thematic facility, funding will be provided periodically to Member States to provide targeted support, assist in EU-level action and respond to urgent needs.

### €1 billion (10%) Mid-term allocation to national programmes:

Instead of allocating all funding at the beginning of the financial period in 2021, 10% of the total fund will be made available to Member States in 2024, taking into account of new or additional pressures.



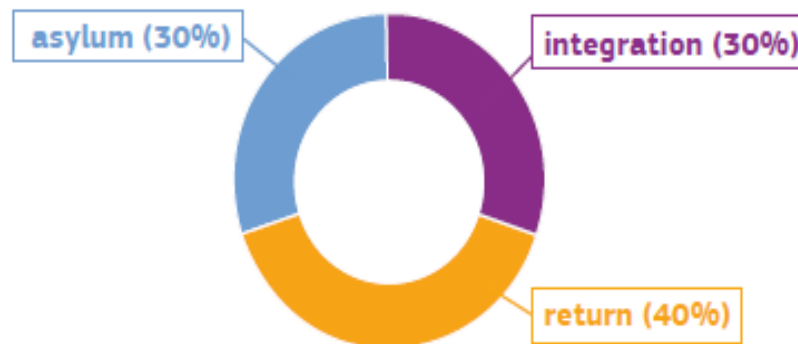
Source: European Commission



Commission  
européenne

## AMF Distribution key

- **Supporting Member States:** €6.3 billion in long-term funding to support Member States in managing migration, reflecting their needs. Each Member State will receive a fixed sum of €5 million with the remainder distributed based on an assessment of the pressures faced and taking into account proportions in the area of asylum (30%), legal migration and integration (30%) and return (40%).



Source: European Commission

## Integrated Border Management Fund

- *IBMF → facilitating and ensuring uniformity between border and customs control to make external borders stronger*
- *Border Management and Visa Instrument → border management equipment for the control of persons*
- *Customs Control Equipment Instrument → customs authorities' equipment for the control of goods at external borders (air, sea land and postal)*



- *The scope of BMVI:*
  - 1) *supporting European integrated border management*
  - 2) *supporting the common visa policy*



## BMVI - Scope of support

- *Equipment (boats, helicopters) and training to support Member States Border and Coast Guards*
- *Finance IT systems and their interoperability*
- *Modernise the common visa policy*





Commission  
européenne

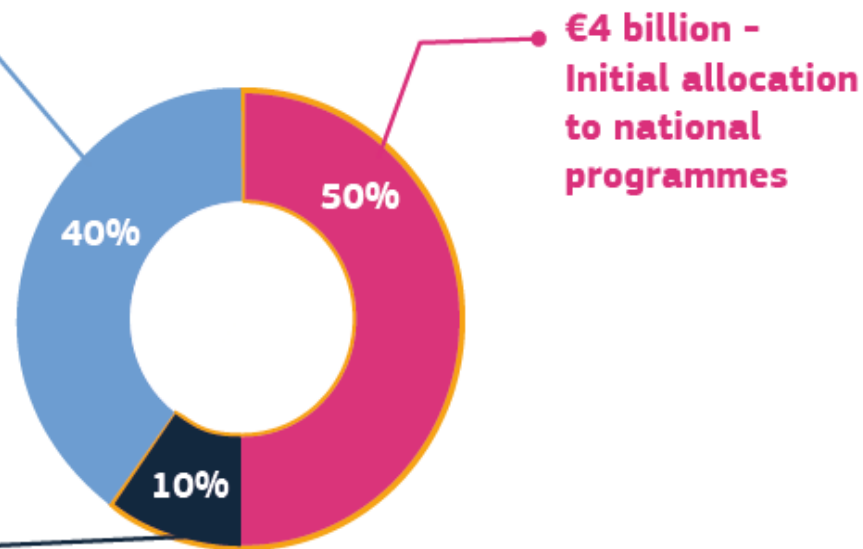
## BMVI budget

### €3.2 billion - New thematic facility:

Under the thematic facility, funding will be provided periodically to Member States to support EU-level action and to respond to urgent needs.

### €0.8 billion - Mid-term allocation to national programmes:

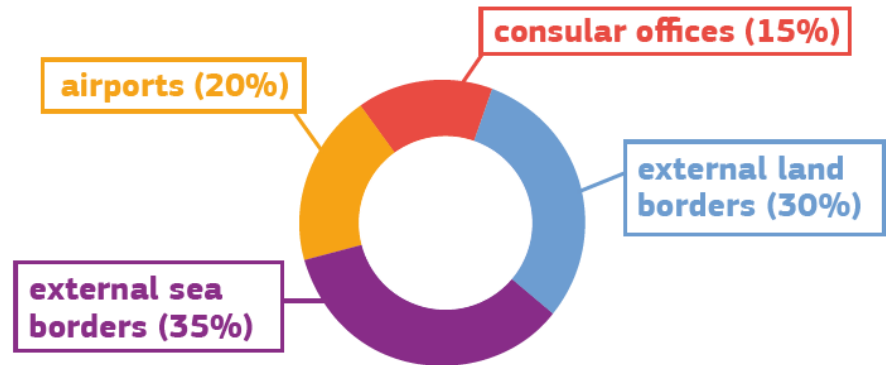
Instead of allocating all funding at the beginning in 2021, 10% of the total fund will be made available to Member States in 2024, based on updated statistical Eurostat data.



Source: European Commission

## BMVI Distribution key

- **Supporting Member States:** €4.8 billion in long-term funding to support Member States border and visa policy. Each Member State will receive a fixed sum of €5 million with the remainder distributed based on the workload, pressure and threat level at external land borders (30%), external sea borders (35%), airports (20%) and consular offices (15%);



Source: European Commission

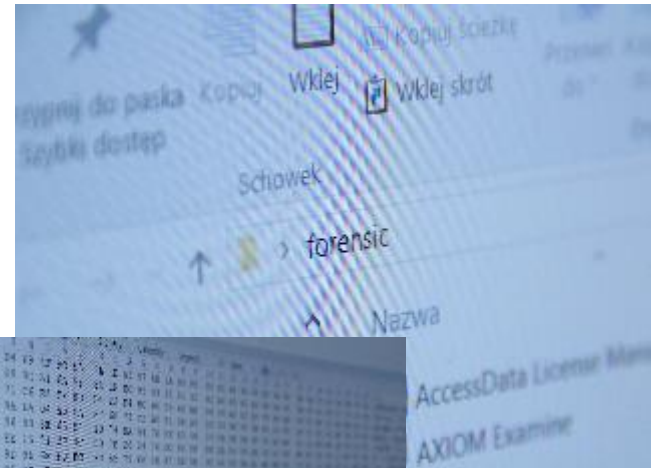
## Internal Security Fund (ISF)

- *Policy objective: to contribute to ensuring a **high level of security** in the Union in particular by **tackling terrorism and radicalisation, serious and organised crime** and **cybercrime** as well as by assisting and protecting **victims** of crime*
- *To be achieved through the following specific objectives:*
  1. *Increase the exchange of information*
  2. *Intensify cross-border joint operations*
  3. *Strengthen capabilities to combat and prevent crime*



## ISF – Scope of support

- *IT systems and IT procedures in the area of internal security (including interoperability)*
- *Operational cooperation (Hot pursuits, joint patrols) and training for specialised units*



- *Joint centres of excellence, joint risk assessments and operational support centres*



## **ISF – budget**

- The financial envelope for the period is EUR 2.5 billion
  - EUR 1.5 billion for the Member States programmes
    - EUR 1.25 billion at the beginning of the programming period
    - EUR 0.25 billion at mid-term review
  - EUR 1.0 billion for the thematic facility



## ISF – allocation key

- EUR 1.5 billion for the Member States programmes
  - EUR 1.25 billion at the beginning of the programming period
  - EUR 0.25 billion at mid-term review
  
- First step – one-time fixed amount of EUR 5 million for each Member States
- Second step – remaining amount will be distributed to the Member States using the criteria as follows:
  - 45 % in inverse proportion to the gross domestic product
  - 40 % in proportion to the size of population
  - 15 % in proportion to the size of their territory

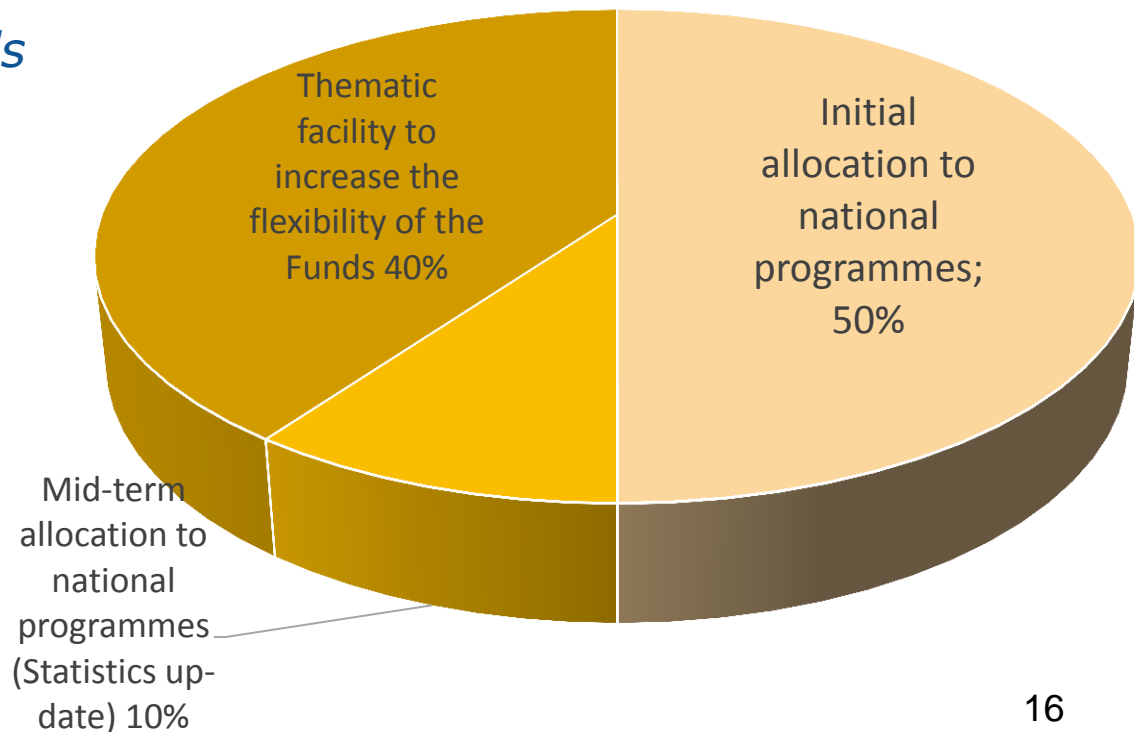
## Improvements in the new Funds

***Increase the flexibility with budget allocations***

*Respond to real-time needs*

***A thematic facility***  
*for providing additional funding to support Union priorities, based on conditionalities*

Fund Envelopes





## Improvements in the new Funds (2)

- **Increased simplification** (*Common Provisions Regulation*):
  - **"Single Rule Book"** for shared management
  - *Financial Regulation* for direct and indirect management
  
- **More focus on the quality of spending** e.g. through performance orientation and strengthened steering of funding (*thematic facility*)
  
- **Improved monitoring and evaluation framework** through better indicators from the start of the programming period



Commission  
européenne

## Common Provisions Regulation for shared management



## Improvements in the new Funds (3)

- ***Better coherence/synergies with other Funds, in particular:***
  - *Long-term integration support is provided through Cohesion Policy funds (ESF+ and ERDF) aiming at integration into the labour market (vocational training, apprenticeship, support to job placement etc.);*
  - *Significantly increased complementarity with the external instruments (NDICI, IPA III) covering a range of actions, for instance, the external aspects of pre-migration, such as tackling the root causes of migration, biometric databases which are instrumental for the readmission agreements, capacity building of police and border authorities etc.*



***Thank you for your attention!***

**Contact:**

**Giovanni Cioffi**

**DG HOME C4, European Commission**

**[Giovanni.Cioffi@ec.europa.eu](mailto:Giovanni.Cioffi@ec.europa.eu)**

**[HOME-MFF-POST2020@ec.europa.eu](mailto:HOME-MFF-POST2020@ec.europa.eu)**